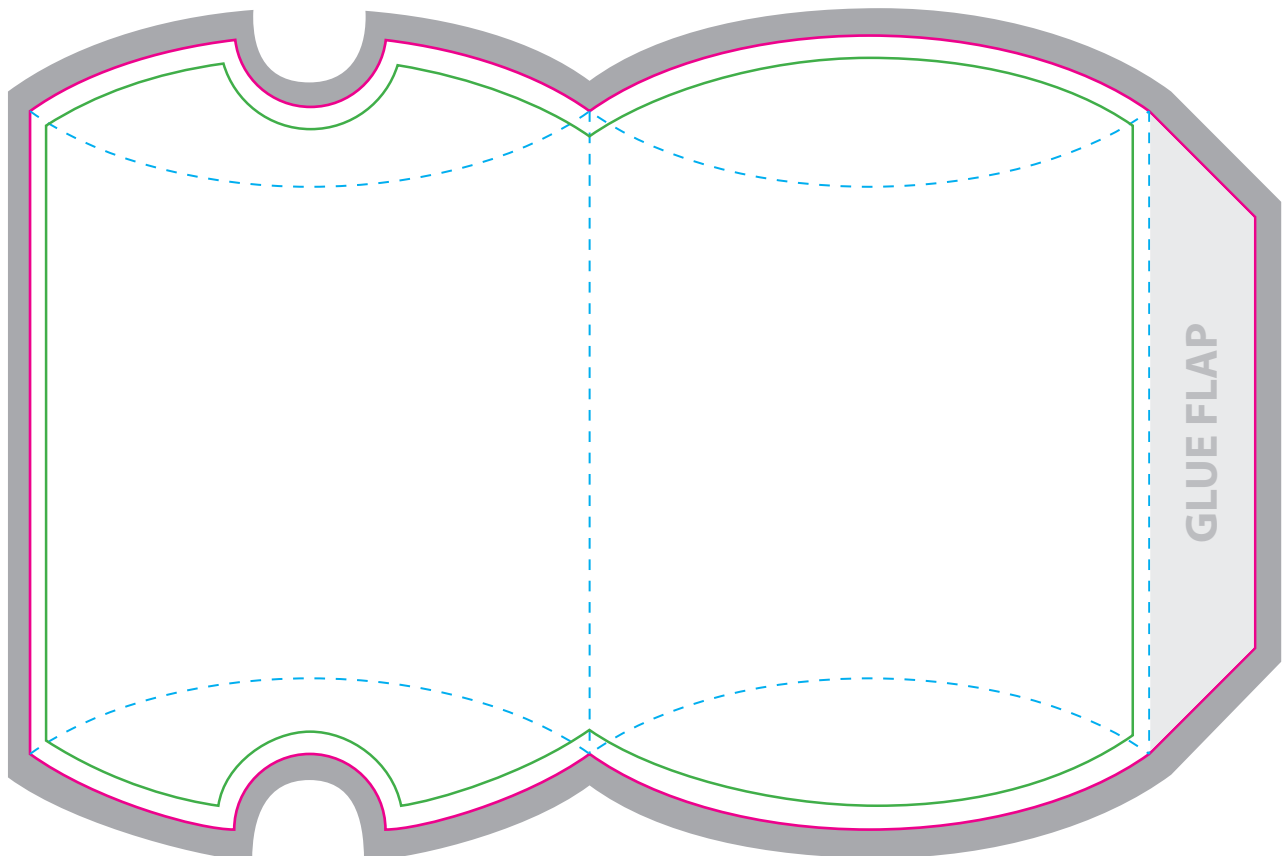




Tips on creating your artwork when using our templates

Please prepare your artwork referring to the trim & bleed details below.

Our technical 'How to Guide' (page 2 of this PDF) will help you ensure the finer details of file preparation are met and your files are ready for print production.



- Trim Area:** This is the finished document size. Any content outside of this area will be trimmed off. Represented by a magenta line on the template, it has been set to a spot colour and named "Cutter".
- Fold Lines:** These are where the creases will appear, which allow the pillow pack to fold into the final shape. Try to avoid placing any text or important elements near or on the fold lines unless you want them to cross over the fold. Represented by a cyan line on the template and set to a spot colour and named "Fold".
- Bleed Area:** Please add a bleed area at least 3mm outside of the final trim area, ensure any image or pattern/gradient on the edge of your design is extended to the outer edge of the bleed area.
- Safe Area:** Please allow for a safe area to keep elements from being too close to the edge, as a guide it is usually about 3mm inside the Trim Area. Please ensure any text or important information is kept inside.

**NEED MORE HELP?
CONTACT US TODAY**



printedpillowpacks.co.uk

support@printedpillowpacks.co.uk

TECHNICAL HOW TO GUIDE

Colours:



CMYK: Please supply your files as a CMYK PDF, RGB is not suitable for print production. Please convert any images to CMYK before creating your PDF.



Pantone colours: Please set any colours that you require to print in a 'dedicated pantone ink' to your chosen pantone colour.



When using large solid areas of black, please use the 4 colour settings below.

Cyan: 50% Magenta: 40% Yellow: 40% Black 100%.

Please set Black text to print in black only.

Images:

To ensure the best possible printed results, please use images with a resolution of 300 dpi at the final printed size.

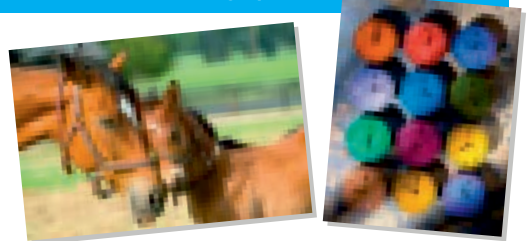
Logos, text blocks and graphics that are integrated in the artwork need to be embedded as a vector or as an image with at least 300 dpi, this will ensure sharp print results.

EXCEPTION: Digital photos, which are natively 72 dpi, but are usually much larger in scale. This larger size allows for high quality when used at smaller sizes.

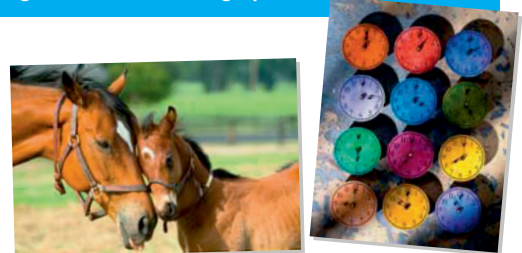
Large format:

Files for Large Format jobs such as banners and roller banners can normally be supplied at half size, we will then scale them up to the correct size when outputting, this will help keep the overall file size smaller, also reduce processing time during preparation and printing. Images for Large Format can be saved at 150 dpi or higher at half the final size and will usually still be acceptable.

Low Resolution Photographs



High Resolution Photographs



If you are unsure whether your job is a Large Format job or if you are concerned about the quality of your files, please give us a call to discuss your project further.

Sending and Preparing your Files:



PDF: Please create all print ready PDF as high resolution 300 dpi with all fonts embedded.



Indesign: If supplying Indesign files, please ensure all fonts and pictures used in your artwork are supplied to us in a separate folder using the "package" function. This collects the relevant files, keeping all links together.



Illustrator: Please embed all images and either supply fonts, or convert all text to outlines.

Knowledgeable Friendly Team:

We're here to help and support you to ensure your files are the best they can be. If you need more information or you need to supply your artwork in a different format to the ones mention above then please call our team to discuss.

**NEED MORE HELP?
CONTACT US TODAY**



printedpillowpacks.co.uk



support@printedpillowpacks.co.uk